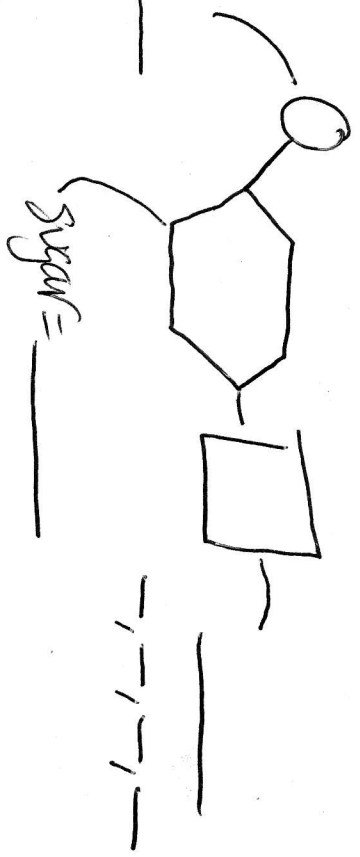


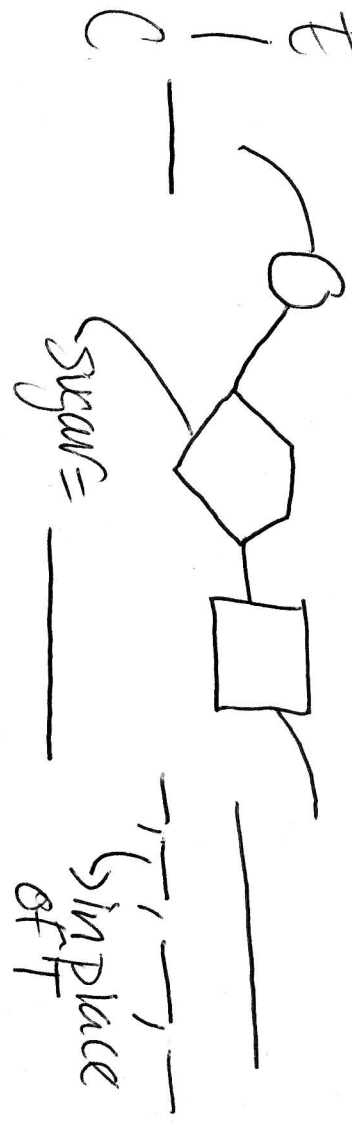
DNA = " _____ "

Made of:

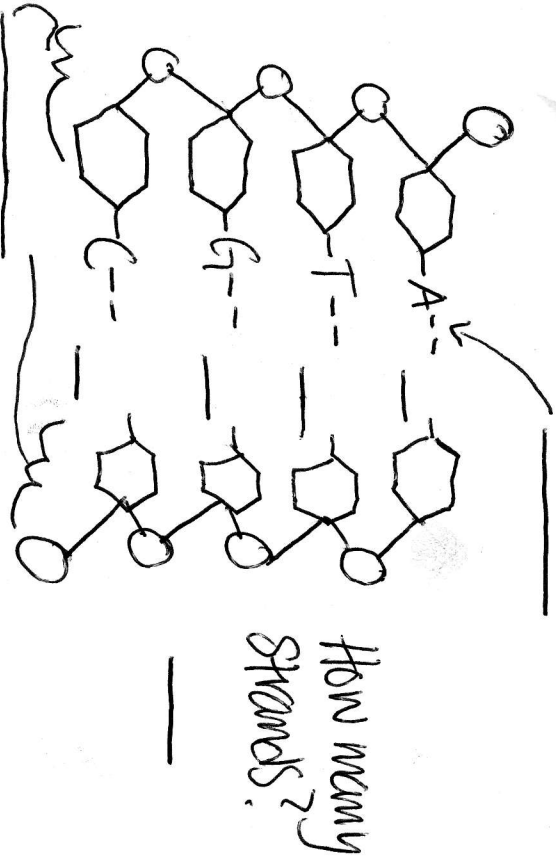


N RNA = " _____ "

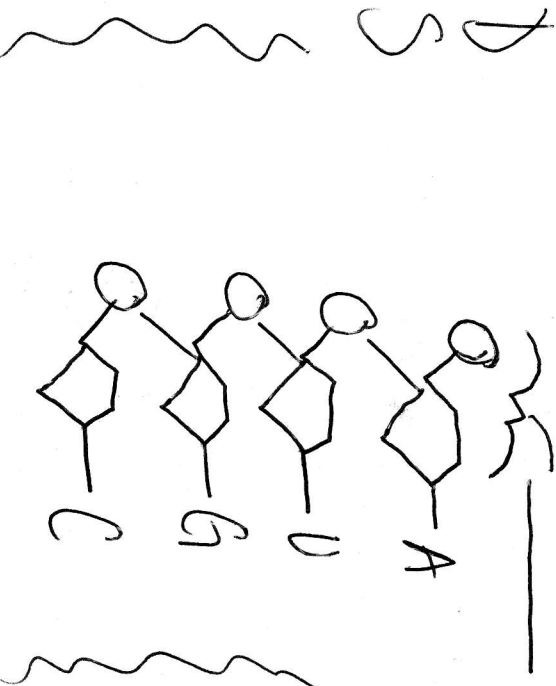
C Also made of:



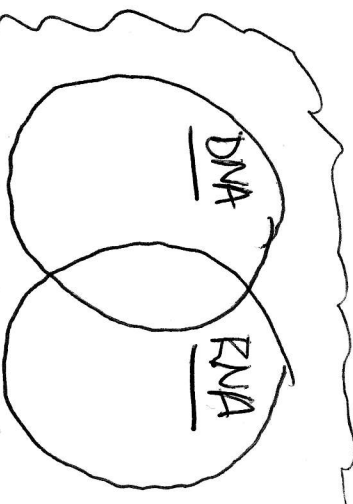
Complimentary Base Pairing Rule:



A why is RNA necessary?



How many strands? _____



Hierarchy of Genetics*

Genome =

→ Chromosome

→ Chromatid

→ Chromatin

→ Gene

→ Codon

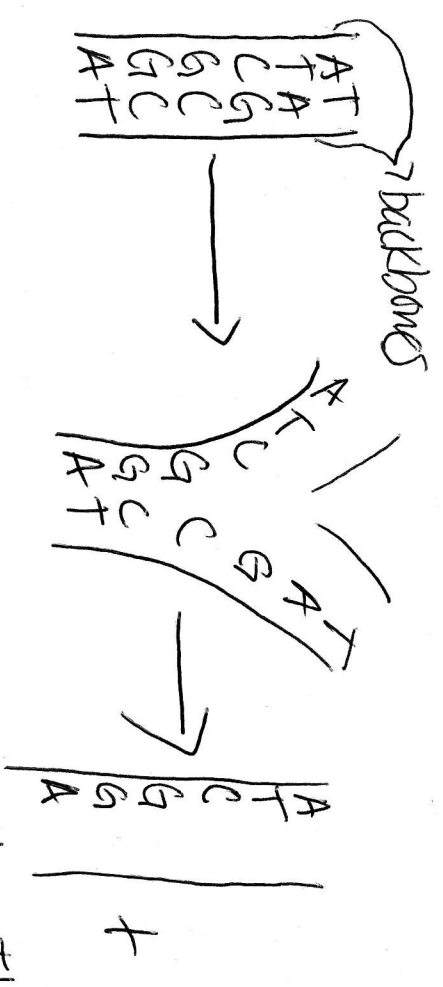
→ Nucleotide

* This gets _____ as you move down the list.

Nucleotides → ^{make} Codons → ^{make} genes → ^{make} proteins → ^{make} traits

Replication =

→ done in preparation for



This is controlled by

in the

The process of Replication is
Semi-conservative =